

### Operational Monitoring of Open-Ocean Carbon Dioxide Removal Deployments: Detection, Attribution, and Determination of Side Effects

By Philip W. Boyd\*, Hervé Claustre\*, Louis Legendre\*, Jean-Pierre Gattuso, and Pierre-Yves Le Traon (\*equal first authors)

Human activities are causing a sustained increase in the concentration of carbon dioxide (CO<sub>2</sub>) and other greenhouse gases in the atmosphere. The resulting harmful effects on Earth's climate require decarbonizing the economy and, given the slow pace and inherent limitations of decarbonization of some industries such as aviation, also the active removal and safe sequestration of CO<sub>2</sub> away from the atmosphere (i.e., carbon dioxide removal or CDR; NASEM, 2022). Limiting global warming to 1.5°C—a target that may already have been exceeded—would require CDR on the order of 100–1,000 Gt CO<sub>2</sub> over the twenty-first century (IPCC, 2018).

Natural terrestrial and ocean processes already remove about half of human CO<sub>2</sub> emissions from the atmosphere, with half of this amount (i.e., a quarter of the total) ending up in the ocean. These natural processes slow down global warming; without the continuous removal of atmospheric CO<sub>2</sub> since the beginning of the Industrial Era (1750), the present (2022) level of 420 ppm would have been reached in the 1980s. In the ocean, CO<sub>2</sub> combines with water (H<sub>2</sub>O) to form dissolved inorganic carbon (DIC: CO<sub>2</sub> gas, H<sub>2</sub>CO<sub>3</sub>, and HCO<sub>3</sub><sup>-</sup> and CO<sub>3</sub><sup>2-</sup> ions), and photosynthetic organisms use some of the DIC to synthesize the organic matter that is the basis of pelagic marine food webs. Marine organic carbon exists in both particulate and dissolved forms (POC and DOC, respectively). A number of physical, chemical, and biological processes, collectively called ocean carbon pumps, transfer carbon from surface waters downward and store it in the ocean as DIC and refractory (i.e., long-lived) DOC and POC in the ocean. Some of this storage takes place on climatically significant timescales and is called carbon sequestration. Sequestration of DIC can occur at any depth, but its potential is higher at greater depths.

There is increasing discussion of implementing marine CDR (mCDR) approaches, which range from methods

based on natural processes to more industrial techniques (NASEM, 2022). Here, we focus on open-ocean mCDR approaches, including alkalization (i.e., adding alkaline substances, such as olivine or lime, to seawater to enhance the ocean's chemical uptake of CO<sub>2</sub> from the atmosphere) and nutrient fertilization (i.e., adding a nutrient that limits phytoplankton photosynthesis, such as iron, to surface waters to enhance the photosynthetic uptake of DIC), which aim to enhance DIC sequestration resulting from increased CO<sub>2</sub> influx from the atmosphere.

There is a growing body of literature on various aspects of mCDR approaches. Published mCDR studies have addressed the appropriateness of implementation, testing the efficiency of sequestering CO<sub>2</sub> and/or assessing detrimental ecological effects (laboratory/mesocosm studies, field trials), and identifying potential deployment sites. Such pilot studies are precursors to possible future mCDR deployments (NASEM, 2022), which should only occur in cases where the pilot studies indicate that mCDR would not unduly disrupt marine ecosystems. In contrast, this paper addresses the situation where mCDRs are to be deployed at scales commensurate with the target of removing gigatons of atmospheric carbon.

Here, considering information from satellites and autonomous platforms combined with artificial intelligence (AI) and models (Figure 1), we describe a future operational monitoring system for the detection, attribution, and determination of side effects of open-ocean mCDR deployments. We mainly address the monitoring challenge described in NASEM (2022), based upon the current and expected readiness of observational platforms and sensors. This approach ensures that the proposed monitoring system would be tractable and deployable. The assessment of future mCDR deployments will include three components, together referred to as MRV: measurement or monitoring

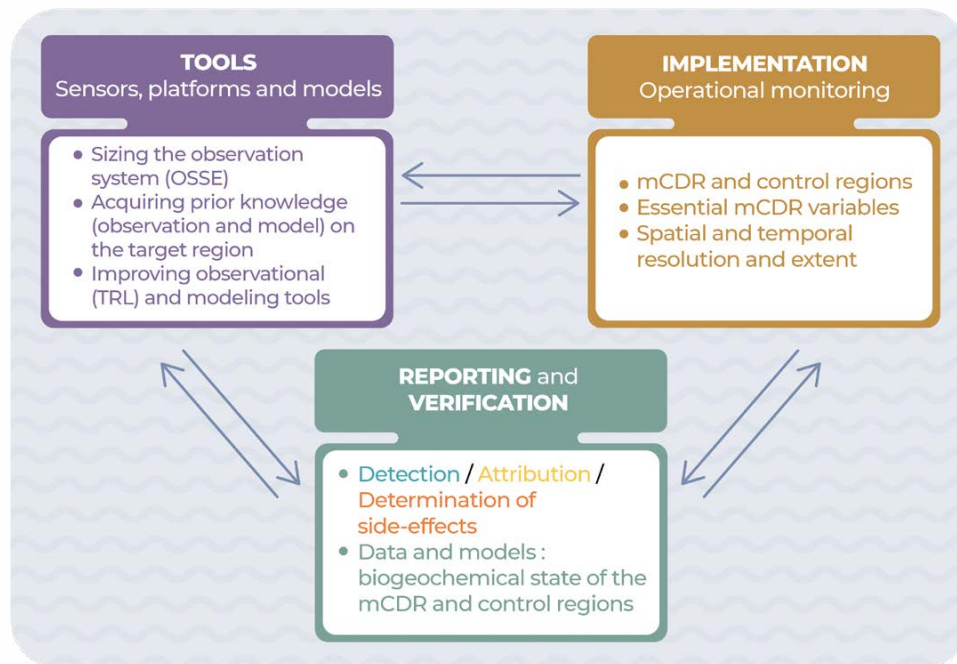


FIGURE 1. The three main components of a marine carbon dioxide removal (mCDR) monitoring system are the tools to be used, field implementation, and reporting and verification. These would interact, and thus progressively improve, prior to and during the long-term mCDR deployment. The development of tools would be accelerated by the urgency created by the mCDR deployments. Connections between the three objectives of the monitoring system (i.e., detection, attribution, and determination of side effects) and the monitored variables are described under “Monitoring mCDR Deployments” in the text. OSSE = Observation System Simulation Experiment. TRL = Technological Readiness Level. *Licensed under CC BY-SA 4.0 by Thomas Boniface*

(M) as described in this study, reporting (R) of the resulting data to a certified authority, and verification (V) by this authority, using data and models, that any deployment is successful at increasing CO<sub>2</sub> influx from the atmosphere and enhancing its sequestration in the ocean. Successful verification of removal and sequestration will result in certification of the mCDR. The last two MRV components are mentioned in the last section of the study.

Our study for this “Frontiers in Ocean Observing” supplement of *Oceanography* focuses on the observational aspects of the monitoring of open-ocean mCDR deployments, with less emphasis on the corresponding, essential modeling components. We nevertheless briefly describe the latter where necessary.

#### OBJECTIVES OF AN mCDR MONITORING SYSTEM

Monitoring is essential in order to quantify the effectiveness (removal) and durability (sequestration) of carbon storage resulting from open-ocean mCDR deployments and to identify environmental impacts (NASEM, 2022). Here, we examine three objectives of a future open-ocean mCDR monitoring system. Our definitions of detection and attribution are consistent with those in the Glossary of the Intergovernmental Panel on Climate Change (IPCC, 2021).

**Detection.** To quantify the amount of carbon sequestered as DIC. This will require quantification of metrics that document both the amount of carbon removed, based on models that assimilate accurate in situ measurements of carbon system variables, and the durability of its removal (i.e., long-term [decadal] estimates of air-sea CO<sub>2</sub> exchanges).

**Attribution.** To assign the detected carbon sequestration solely to a particular mCDR deployment. Attribution requires an understanding of the processes that jointly determine the success or failure of the given mCDR deployment and must thus address the influence of complex drivers in the carbon cycle to demonstrate additionality (see next section). Attribution addresses the proportion of carbon sequestration that can be attributed to an mCDR deployment, even if there are contributions by other drivers within the carbon cycle. This will involve advanced modeling capabilities that simulate the state of the coupled physical and biogeochemical ocean and its modification by the mCDR deployment.

**Determination of Side Effects.** To identify and quantify ecological impacts of the mCDR and ensure that they do not exceed the impacts expected from the pilot studies.

The mCDR deployments will necessarily modify the ocean, but intended and unintended ecological impacts are poorly known. This will require monitoring ecological variables in at least the upper 1,000 m as well as deeper, including at the seafloor where benthic systems could be affected. Side effects would be assessed through modeling studies of the impacts of biogeochemical changes on marine ecosystems. Unacceptable ecological side effects, acute or chronic, may lead to the termination of an mCDR deployment.

#### MODEL VALIDATION, EXCLUSION, AND ADDITIONALITY

To achieve these three objectives, model simulations will be run, with and without mCDR. In order to fulfill this role, simulations will have to capture many ongoing changes in the ocean that include those due to climate change, the hysteresis effects from climate change, the effects of other mCDR (and terrestrial CDR), and the effects of emissions reductions on the ocean carbon cycle. It will require advanced modeling capabilities that could effectively simulate the state of the coupled physical and biogeochemical ocean and its changes under the different mCDR scenarios. Such models pose many scientific and technological challenges that impede the development of Digital Twins of the Ocean (DTO). The DTO will combine next-generation ocean modeling, artificial intelligence, and high-performance computing to create digital replicas of the ocean that are regularly informed and improved with observations. Some of the observations will be used in the models, and others will be kept for model validation.

Extensive validation of these models and their improvements (e.g., optimization of model parameters) will be needed well in advance of and during mCDR deployments. Confirming that the simulations are consistent with observations will require the initiation of monitoring a long time before any mCDR deployment. During this pre-deployment period, no mCDR could be undertaken in the mCDR-intended region.

However, there may be cases where model validation could not be undertaken well in advance of the mCDR deployments, for example, where a deployment would take place without prior, long-term consultation with the authority to which monitoring would be reported. In such a case, the results of model simulations run with and without mCDR could be compared with observations made in the mCDR-deployment region and one or more control regions (with long-term time-series observations) where

conditions would be comparable to those in the selected mCDR region and where no mCDR of any type would be deployed. Of course, control regions will eventually become “contaminated” by the spread of DIC—via ocean circulation—from mCDR deployed elsewhere (e.g., Boyd and Bressac, 2016), but they could be used for model validation before this occurs and even after.

Failure to implement either pre-deployment periods or control regions would make attribution impossible and therefore compromise the monitoring of all mCDR deployments in a given ocean region. In addition, an open registry or metadatabase of the mCDR pilot studies and deployments would be very useful in this context. It would provide information, in particular for modelers, on the location and depth of each activity and key information on its technical aspects (e.g., for alkalization, the mineral type, timing, and amount of alkalinity added).

Furthermore, we assume here the desirable exclusion principle, whereby the deployment of one type of mCDR in a given ocean region excludes the possibility of deploying other types there. This principle stems from the likelihood that multiple-type deployments in a given region, especially as mCDR deployments aim to sequester carbon at the gigaton scale,<sup>1</sup> would make attribution of individual deployments impossible (Boyd and Bressac, 2016). Exclusion is also important because multiple-type deployments could potentially cause interactive side effects that were not anticipated by single-type mCDR pilot studies.

Pre-deployment periods or control regions—in situ or in models—are also needed to assess the additionality of mCDR deployments, defined in IPCC (2022) as: “The property of being additional. Mitigation is additional if the greenhouse gas emission reductions or removals would not have occurred in the absence of the associated policy intervention or activity.” Thus, additionality is the requirement that the net increase in the air-to-sea CO<sub>2</sub> flux due to an mCDR deployment (i.e., based on detection and attribution) exceeds the flux in the absence of this mCDR.

Monitoring for additionality will be especially challenging as the change in net carbon flux into the ocean and the magnitude of carbon sequestration caused by an mCDR deployment will be very small compared to natural air-sea carbon fluxes and the magnitude of the ocean carbon sink. In addition, the models will need to take into account the inherent uncertainties of field measurements. This will pose challenges for both observation and modeling.

---

<sup>1</sup> The intended gigaton-scale magnitude of mCDR deployments would be much larger than existing multiple overlapping uses and perturbations. For example, global marine capture fisheries and aquaculture harvested 112 Mt of animals and 36 Mt of seaweeds (fresh weight) in marine waters in 2020 (FAO, 2022), which represented ~0.02 GtC yr<sup>-1</sup>.

## GENERAL REQUIREMENTS FOR AN mCDR MONITORING SYSTEM

Guidelines for monitoring were set for the Global Ocean Observing system (GOOS) in the context of the Framework for Ocean Observation (FOO; Tanhua et al., 2019). A key element of the FOO is its organization and coordination around essential ocean variables (EOVs) rather than specific observing systems. The mCDR operational system described here differs from the GOOS observations, but also focuses on EOVs.

We advocate that “essential mCDR variables” would include most current EOVs (see GOOS, 2021), along with more detailed data on lower atmosphere CO<sub>2</sub> concentration and oceanic DIC used to estimate air-sea CO<sub>2</sub> flux. Variables would also include wind speed, which has a strong influence on air-sea gas exchange.

The effects of mCDR deployments on carbon capture and sequestration will accumulate over time. Consequently, meeting the three objectives discussed above will require long-term monitoring.

Given the remote nature and carbon-sequestration target of open-ocean mCDR deployments, monitoring their effects will require systems with at least the following characteristics to efficiently address the objectives of detection, attribution, and determination of side effects:

- Calibrated sensors on autonomous platforms, that is, satellites (Figure 2) and in situ robots (see Box 1)
- Sampling over large surface areas to address horizontal eddy diffusion and transport
- Recurrent long-term measurements, commensurate with the duration of mCDR deployments
- Quasi-simultaneous estimates of air-sea CO<sub>2</sub> exchange and concentrations of DIC, particulate inorganic carbon (PIC), DOC, and POC from surface to depth to monitor the fate of the additional carbon

Air-sea CO<sub>2</sub> flux cannot be measured directly over large areas; it would be estimated by modeling. To do so, at least two parameters of the carbonate system should be measured in the water column. These parameters include pH, total DIC, total alkalinity (TA), and CO<sub>2</sub> partial pressure (pCO<sub>2</sub>). Detecting changes in the carbonate system is challenging, and detecting a superimposed mCDR effect would be very difficult.

The monitoring system would combine satellite remote sensing (Figure 2) and long-term regional in situ measurements. The latter would be performed with autonomous



FIGURE 2. One of the numerous satellites used for mCDR monitoring, PACE (Plankton, Aerosol, Cloud, ocean Ecosystem, to be launched in early 2024) will be equipped with a hyperspectral spectrometer that could be used for assessing possible ecological side effects of mCDR deployments (e.g., changes in phytoplankton community composition). This figure is a derivative of [https://commons.wikimedia.org/wiki/File:PACE\\_Spacecraft\\_beauty2.jpg](https://commons.wikimedia.org/wiki/File:PACE_Spacecraft_beauty2.jpg) by NASA, in the public domain.

robots (see Box 1), as described by Chai et al. (2020). Biogeochemical data would subsequently be analyzed using AI and assimilated in models. The integration of these platforms, analyzing their data with AI, and combining the data with models is already partly implemented in open-ocean research (e.g., Claustre et al., 2021) and could be readily applicable to monitor open-ocean mCDR deployments.

Ideally, the observational and modeling components of the mCDR monitoring system should be in place prior to an mCDR deployment. If this is impossible, data collected by the global networks of Biogeochemical-Argo (BGC-Argo) floats (Figure 3) and ocean color satellites (Figure 2) could document natural variability and contribute to the validation/calibration of models required for attribution.

## COMPONENTS OF AN mCDR MONITORING SYSTEM

Satellites and underwater robots operate autonomously, making relatively high-frequency measurements over several years. Present-day BGC-Argo floats (Figure B1) can achieve 300 profiles of up to 13 different variables<sup>2</sup> during their lifetimes, for example, profiling every five days over four years. Horizontally, satellites (Figure 2) cover large surfaces (with a spatial resolution of up to 4 × 4 km), and

<sup>2</sup> Temperature, salinity, dissolved O<sub>2</sub>, pH, dissolved NO<sub>3</sub>, chlorophyll *a*, particulate backscattering coefficient (b<sub>bp</sub>), colored dissolved organic matter (CDOM), downwelling irradiance, upwelling radiance, particle size spectra, particles and plankton 100–2,00 μm, optical sediment trap (transmissometer).



## BOX 1. ROBOTS TO MONITOR mCDR DEPLOYMENTS

The word “robots” refers here to autonomous vehicles and platforms, which include:

- Buoyancy-driven robots, encompassing
  - Biogeochemical (BGC)-Argo floats (Figures B1 and B2)
  - BGC-gliders (Figure B3)
- Uncrewed surface vehicles (USVs; Figure B4)

Floats and USVs could rendezvous for data intercomparison and transfer (Figure B5). In the future, USVs could intercept and reposition floats to maintain them in the best monitoring locations or create “virtual moorings.”

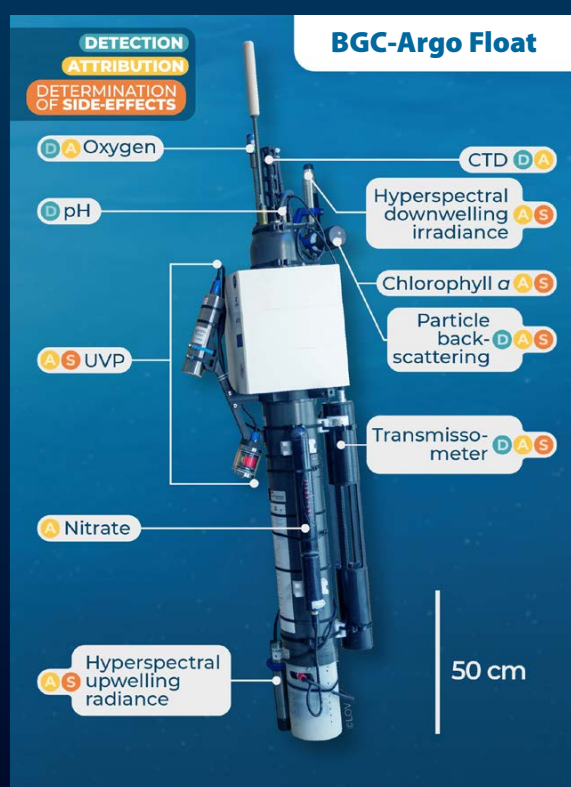


FIGURE B1. A jumbo biogeochemical profiling float (BGC-Argo float, REFINE type NKE CTS5) can provide profiles every five days over four years. Sensors are identified that contribute to the three mCDR monitoring objectives (detection, attribution, and determination of side effects). *Photo credit: David Luquet, used with his permission. Licensed under CC BY-SA 4.0 by Thomas Boniface*

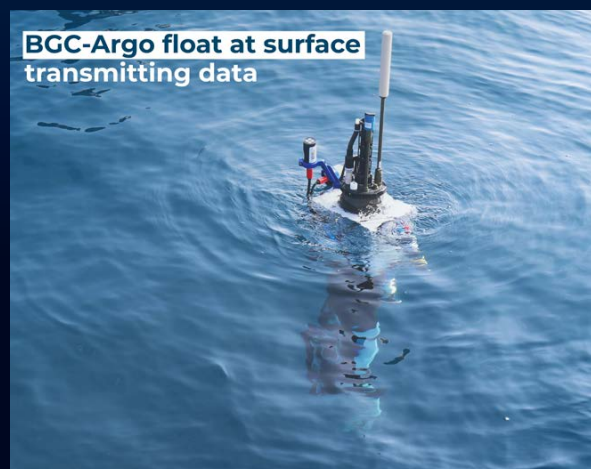
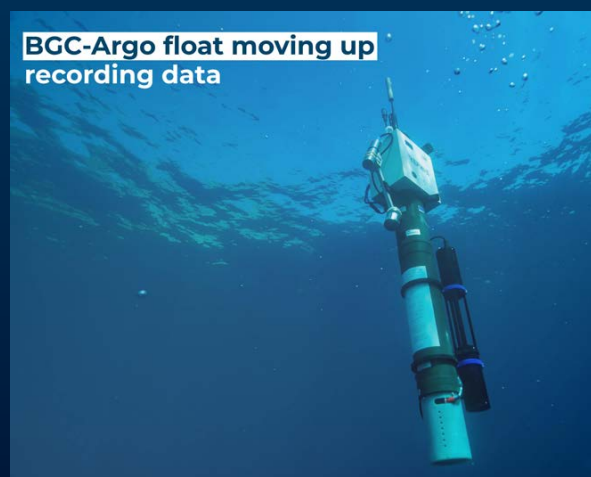


FIGURE B2. BGC-Argo floats record variables from 2,000 m depth to the surface, where data are rapidly transmitted to a satellite. The floats then descend to a parking depth (e.g., 1,000 m) where they stay for 10 days before initiating the next vertical profile. During the parking phase, floats have the potential to monitor key properties for mCDR such as wind (passive acoustic) and particle flux (transmissometer used as optical sediment trap). *Photo credits: (top) David Luquet and (bottom) Thomas Boniface, used with their permissions. Licensed under CC BY-SA 4.0 by Thomas Boniface.*

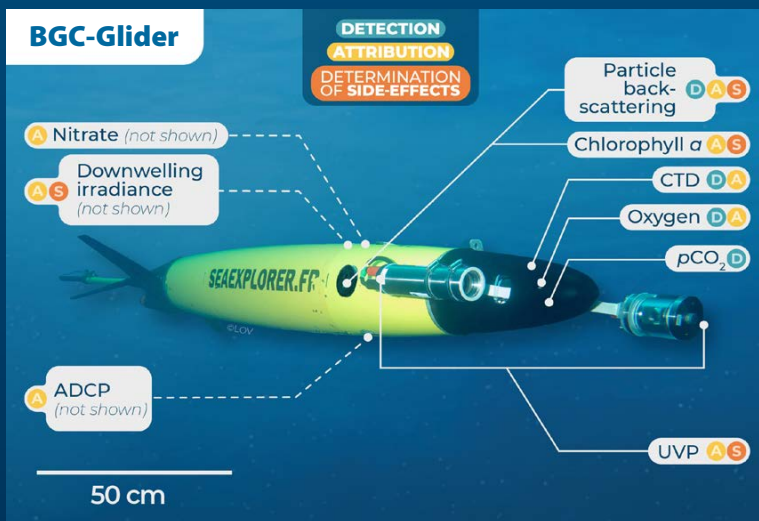


FIGURE B3. Biogeochemical SEAEXPLORER underwater glider (BGC-glider) equipped with almost the same array of sensors as BGC-Argo floats (Figure B1). Sensors are identified for the three mCDR monitoring objectives (detection, attribution, and determination of side effects). Such gliders can typically dive to 1,000 m depth and stay at sea up to 100 days. Photo credit: David Luquet, used with his permission. Licensed under CC BY-SA 4.0 by Thomas Boniface

FIGURE B4. A saildrone, a USV powered by wind and solar energy, with identification of sensors for the three mCDR monitoring objectives (detection, attribution, and determination of side effects). USVs would be key in acquiring accurate  $p\text{CO}_2$  measurements for mCDR monitoring. The USVs could be deployed as fleets of intercommunicating platforms for  $p\text{CO}_2$  measurements, and some could also rendezvous with BGC-Argo floats (Figure B5). Another type of USV, the waveglider (not shown), is powered by wave motion and solar energy. This work is a derivative of [https://commons.wikimedia.org/wiki/File:SD\\_1036.jpg](https://commons.wikimedia.org/wiki/File:SD_1036.jpg) by NOAA and Saildrone, in the public domain.

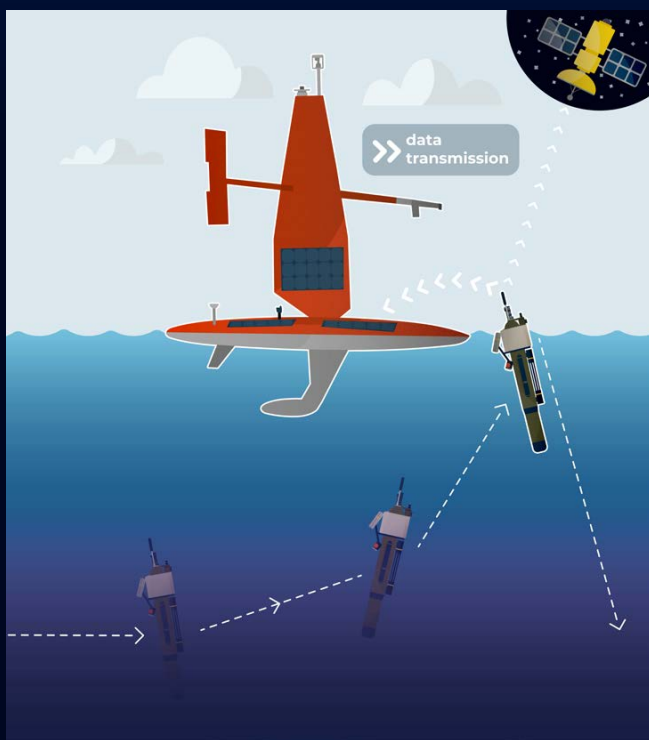
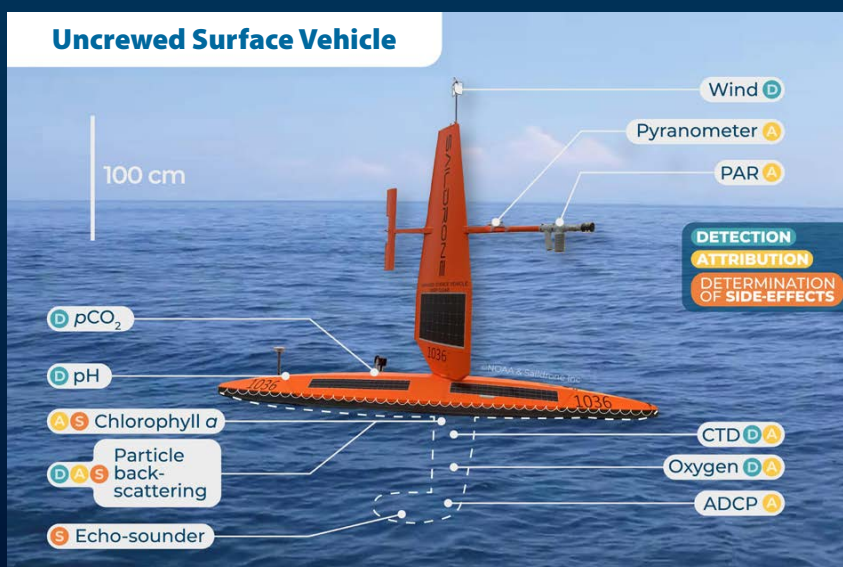


FIGURE B5. During a rendezvous between a saildrone and a surfacing BCG-Argo float, the USV would record data from the float and simultaneously make  $p\text{CO}_2$  measurements. Data files too large to be transmitted to satellites by the float (e.g., particle and plankton images) could be transferred to the USV for later downloading when it returns to port. Licensed under CC BY-SA 4.0 by Thomas Boniface

floats can be operated as fleets with strong interoperability of measurements (Figure 3). Vertically, remote sensing investigates the ocean skin (the upper 10–100  $\mu$ ) for some variables (e.g., temperature) and deeper waters for others (e.g., ocean color), whereas BGC-Argo floats and

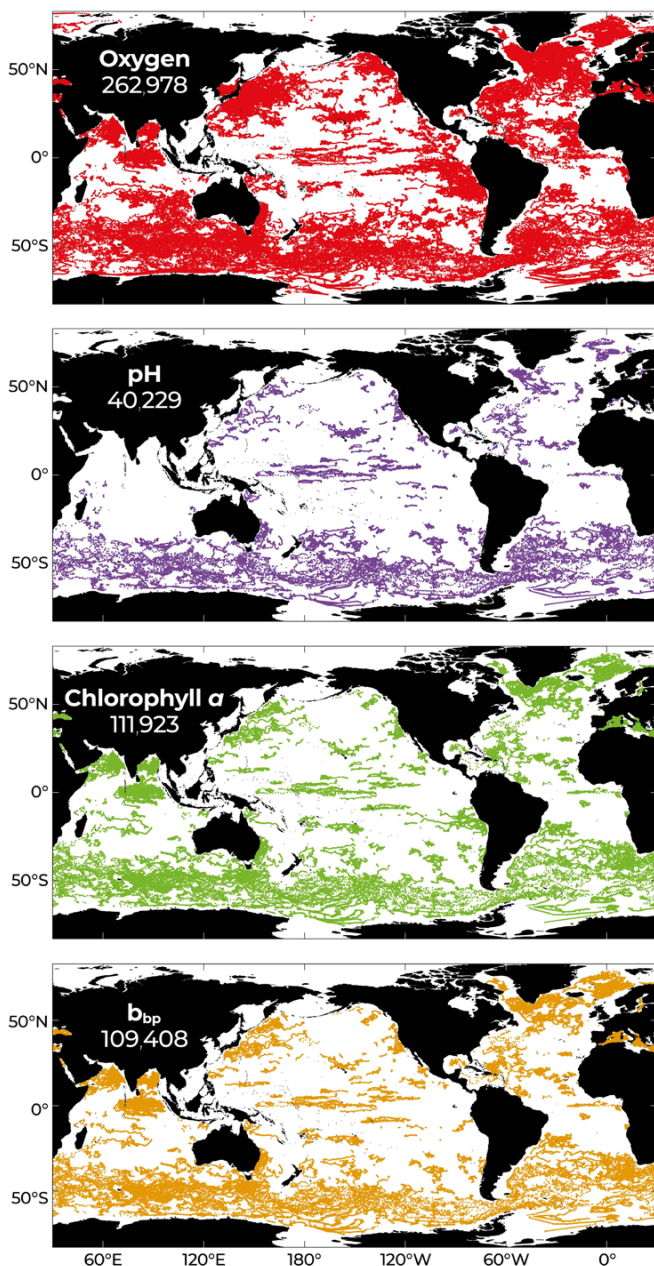


FIGURE 3. Networks of BGC-Argo floats (Figures B1 and B2) will be used for cost-effective acquisition of in situ data required for mCDR monitoring and modeling. The maps show the data for four variables acquired by the present network of floats as of 23 January 2023. The white number on each map indicates the number of profiles available for that variable. Updated versions of these maps are available from the Biogeochemical-Argo website ([http://biogeochemical-argo.org/cloud/document/implementation-status/BGC\\_summary.pdf](http://biogeochemical-argo.org/cloud/document/implementation-status/BGC_summary.pdf)). Licensed under CC BY-SA 4.0 by Raphaëlle Sauzède

BGC-gliders make measurements from the surface, including the ocean-atmosphere interface, to 2,000 m depth (Figures B2 and B3).

#### DESIGNING AN mCDR MONITORING SYSTEM

Observation System Simulation Experiments (OSSEs) would be used to design the observing system required for the three objectives of mCDR monitoring: detection, attribution, and determination of side effects. OSSEs are powerful tools that provide quantitative assessments of the impacts of observations combined with models to reconstruct the coupled physical and biogeochemical state of the ocean (Figure 4). Using OSSEs, observing systems could be designed to fit the characteristics of long-term mCDR deployments. The observations to be considered in these OSSEs include those from the fundamental GOOS system (satellite and in situ; Figures 2 and 5) and specific new observations in the mCDR regions. Developing such OSSEs is challenging and will require advanced modeling capabilities.

A successful mCDR deployment would shift the perturbed ocean region from its pre-mCDR trajectory to a different, new mCDR trajectory with enhanced carbon sequestration. Measurements prior to mCDR deployments and during the transition period would be especially useful for detection and attribution, and would help identify any initial acute ecological side effects. Measurements during the ongoing mCDR deployment would be used for long-term detection and attribution, and to identify further ecological effects.

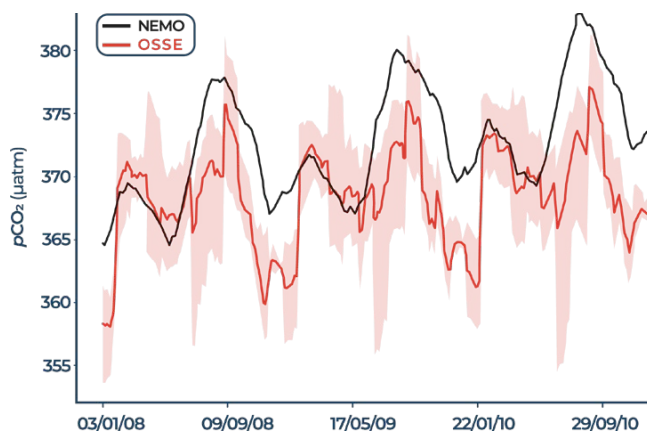


FIGURE 4. Observation System Simulation Experiments (OSSEs) will provide powerful tools for quantitative assessments of the impacts of observations combined with models, to be used to design mCDR monitoring systems. The figure shows the mean of feedforward neural network (FFNN) outputs of  $p\text{CO}_2$  in the North and South Atlantic Oceans for corresponding runs of an OSSE and the NEMO/PISCES model. Shading corresponds to the maximum and minimum values from four FFNN outputs for the OSSE. This figure is a derivative of Figure 7a of Denvil-Sommer et al. (2021), used under CC BY 4.0



Based on present-day observational limitations (e.g., pH is the only variable of the carbonate system measured on BGC-Argo floats; [Figure B1](#)) in relation to the anticipated magnitude of mCDR from model projections (Keller et al., 2014), detection, attribution, and detection of side effects will require rapid advances in sensor technology.

### MONITORING mCDR DEPLOYMENTS

The monitoring and evaluation of mCDR deployments would use satellites as well as surface and underwater robots to make the following measurements:

**Detection.** To assess the effectiveness of an mCDR deployment in sequestering CO<sub>2</sub>, changes in concentrations of DIC, PIC, TA, DOC, and POC and particle downward fluxes should be measured over the water column based on the design derived from OSSEs. These observations will be used to reconstruct the ocean carbon state together with models (data assimilation). Running OSSEs (with and without mCDR) will also provide ocean carbon state reconstruction errors and the duration of the monitoring required to allow separation of noise from signal. Sensors already exist, or are being developed, for most of these variables. In addition to pH already measured by robots, there are ongoing efforts to adapt sensors to autonomous platforms that measure at least one other parameter of the carbonate system (i.e., TA or pCO<sub>2</sub>) to calculate DIC or the air-sea CO<sub>2</sub> flux (Bushinsky et al., 2019). Estimating accurate ocean-atmosphere CO<sub>2</sub> fluxes also requires wind speed, particularly during storms. These values can be derived from BGC-Argo float or BCG-glider passive acoustic measurements, which should be systematically deployed.

**Attribution.** To understand and deconvolve the processes involved in the cumulative outcome of an mCDR deployment, measurements similar to those used for ocean biological carbon pump studies (e.g., Claustre et al., 2021) would be used. Variables required to validate and run models would likely include environmental forcing (hydrodynamics, light, nutrients), carbon-related processes (net community production, organic matter remineralization), and resulting chemical changes (e.g., DIC and O<sub>2</sub>).

**Determination of Side Effects.** To assess the ecological impacts of an mCDR deployment, both satellite and in situ optical measurements would provide information on changes in plankton size structure and composition. Images and active acoustic-based sensors would provide information on zooplankton and small pelagic organisms (Claustre et al., 2021). In the case of mCDR deployments that purposefully alter the assemblage of suspended

particles (e.g., alkalization), changes in underwater irradiance and associated effects on photosynthesis would also be monitored in situ and remotely, for example, through hyperspectral radiometric measurements.

### GOVERNANCE OF AN mCDR MONITORING SYSTEM

Published mCDR studies have mostly considered research aspects for future deployments as explained in the Introduction. Our study represents a departure from these studies as it details an operational system designed to monitor large-scale open-ocean mCDR deployments. For verification to be credible, the monitoring system and the interpretation of measurements in terms of sequestration efficiency must be performed independently of the entities deploying mCDRs. In addition, all monitoring data should promote the FAIR principles of findability, accessibility, interoperability, and reuse.

Meeting these operational characteristics will require governance and best practices fundamentally different from those of curiosity-driven or targeted research (Chapter 9 of NASEM, 2022). Robust governance would be required to implement the following constraints, without which mCDR could not be effectively deployed:

- Confirmation that the principle of additionality is fulfilled, and assessment of evidence of the effectiveness of mCDR in sequestering CO<sub>2</sub> (detection)
- Implementation of pre-deployment periods or control regions (attribution)

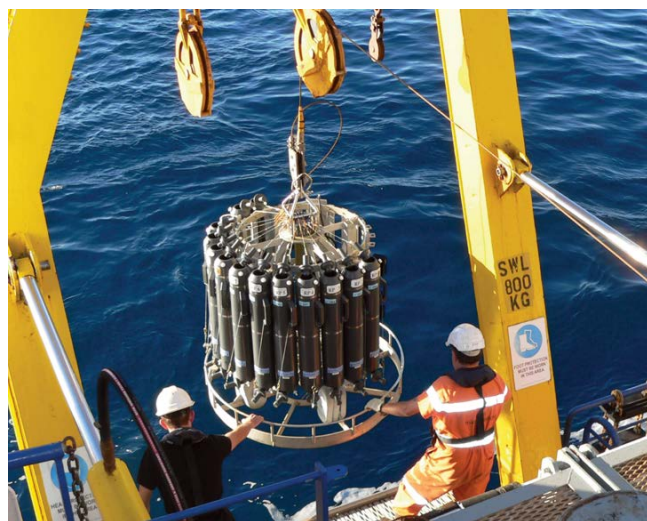


FIGURE 5. A CTD rosette is deployed from an oceanographic ship as part of Global Ocean Observing System (GOOS) sampling. Observations from the GOOS system would be used for designing OSSEs. [https://commons.wikimedia.org/wiki/File:CSIRO\\_Sciencelimage\\_10807\\_Deploying\\_the\\_CTD\\_instrument\\_from\\_the\\_RV\\_Southern\\_Surveyor.jpg](https://commons.wikimedia.org/wiki/File:CSIRO_Sciencelimage_10807_Deploying_the_CTD_instrument_from_the_RV_Southern_Surveyor.jpg) by Bob Beattie, CSIRO, used under CC BY 3.0



- Implementation of the exclusion principle (i.e., excluding additional mCDR types—and their confounding influences—from any region where there is an ongoing type of mCDR deployment (attribution))
- Assessment of the degree of ecological side effects to decide if their severity should lead to termination of the mCDR deployment (determination of side effects)

Strong governance will be required, as it is highly likely that if a license is granted for a particular mCDR method, then subsequent permissions will be granted for other promising mCDR methods. This is in addition to coastal blue carbon and terrestrial CDR approaches. Achieving efficient monitoring entails two deployment constraints described above: the setting of pre-deployment periods (during which no mCDR could be undertaken in the mCDR-intended region) or control regions (where no mCDR of any type would be deployed), and the exclusion principle whereby the deployment of one type of mCDR in a given ocean region excludes the possibility of deploying other types there. The implementation and effective enforcement of these two constraints would require an ocean governance framework that does not presently exist.

What could be the role(s) of the ocean research community in monitoring forthcoming mCDR deployments? First, prepare plans for mCDR monitoring systems, as outlined above, and contribute to defining governance and best practices of mCDR monitoring. Second, train the scientists and engineers who will run the mCDR monitoring systems and analyze/model the resulting information. Third, contribute to the multi-faceted education of the scientific and other personnel who will staff the oversight authorities for mCDR deployments. Fourth, act as advisors to and watchdogs for the mCDR deployment entities and authorities as knowledge on the influence of mCDR deployments on ocean processes advances.

Until now, the research community has studied the ocean as if it were a pristine environment, despite anthropogenic changes due to factors such as ongoing CO<sub>2</sub> pollution and industrial fishing. With mCDR deployments, this illusion would be dispelled, and we would be faced with a new ocean reality. In order to be ready for (near) future open-ocean mCDR deployments, the entire oceanographic community should investigate without delay the desired characteristics and likely challenges of the operational system(s) needed to monitor a profoundly modified ocean.

## REFERENCES

- Bushinsky, S.M., Y. Takeshita, and N.L. Williams. 2019. Observing changes in ocean carbonate chemistry: Our autonomous future. *Current Climate Change Reports* 5:207–220, <https://doi.org/10.1007/s40641-019-00129-8>.
- Boyd, P.W., and M. Bressac. 2016. Developing a test-bed for robust research governance of geoengineering: The contribution of ocean iron biogeochemistry. *Philosophical Transactions of the Royal Society A* 374(2081):20150299, <https://doi.org/10.1098/rsta.2015.0299>.
- Chai, F., K.S. Johnson, H. Claustre, X. Xing, Y. Wang, E. Boss, S. Riser, K. Fennel, O. Schofield, and A. Sutton. 2020. Monitoring ocean biogeochemistry with autonomous platforms. *Nature Reviews Earth & Environment* 1:315–326, <https://doi.org/10.1038/s43017-020-0053-y>.
- Claustre, H., L. Legendre, P.W. Boyd, and M. Levy. 2021. The oceans' biological carbon pumps: Framework for a research observational community approach. *Frontiers in Marine Science* 8:780052, <https://doi.org/10.3389/fmars.2021.780052>.
- Denvil-Sommer, A., M. Gehlen, and M. Vrac. 2021. Observation system simulation experiments in the Atlantic Ocean for enhanced surface ocean pCO<sub>2</sub> reconstructions. *Ocean Science* 17(4):1,011–1,030, <https://doi.org/10.5194/os-17-1011-2021>.
- FAO (Food and Agriculture Organization of the United Nations). 2022. *The State of World Fisheries and Aquaculture 2022. Towards Blue Transformation*. FAO, Rome, 266 pp., <https://doi.org/10.4060/cc0461en>.
- GOOS (Global Ocean Observing System). 2021. Essential Ocean Variables, [https://www.goosocean.org/index.php?option=com\\_content&view=article&id=14&Itemid=114](https://www.goosocean.org/index.php?option=com_content&view=article&id=14&Itemid=114).
- IPCC (Intergovernmental Panel on Climate Change). 2018. Summary for policymakers. Pp. 1–24 in *Global Warming of 1.5°C. An IPCC Special Report on the Impacts of Global Warming of 1.5°C Above Pre-industrial Levels and Related Global Greenhouse Gas Emission Pathways, in the Context of Strengthening the Global Response to the Threat of Climate Change, Sustainable Development, and Efforts to Eradicate Poverty*. V. Masson-Delmotte, P. Zhai, H.-O. Pörtner, D. Roberts, J. Skea, P.R. Shukla, A. Pirani, W. Moufouma-Okia, C. Péan, R. Pidcock, and others, eds. Cambridge University Press, Cambridge, UK, and New York, NY, USA, <https://doi.org/10.1017/9781009157940.001>.
- IPCC. 2021. Annex VII: Glossary. J.B.R. Matthews, J. S. Fuglestedt, V. Masson-Delmotte, V. Möller, C. Méndez, R. van Diemen, A. Reisinger, and S. Semenov, eds. Pp. 2,193–2,204 in *Climate Change 2021: The Physical Science Basis. Contribution of Working Group I to the Sixth Assessment Report of the Intergovernmental Panel on Climate Change*. V. Masson-Delmotte, P. Zhai, A. Pirani, S. L. Connors, C. Péan, S. Berger, N. Caud, Y. Chen, L. Goldfarb, M. I. Gomis, and others, eds, Cambridge University Press, Cambridge, UK, and New York, NY, US.
- IPCC. 2022. Annex I: Glossary. R. van Diemen, J.B.R. Matthews, V. Möller, J.S. Fuglestedt, V. Masson-Delmotte, C. Méndez, A. Reisinger, and S. Semenov, eds. In *IPCC, 2022: Climate Change 2022: Mitigation of Climate Change. Contribution of Working Group III to the Sixth Assessment Report of the Intergovernmental Panel on Climate Change*. P.R. Shukla, J. Skea, R. Slade, A. Al Khourdajie, R. van Diemen, D. McCollum, M. Pathak, S. Some, P. Vyas, R. Fradera, and others, eds, Cambridge University Press, Cambridge, UK, and New York, NY, USA.
- Keller, D.P., E.Y. Feng, and A. Oschlies. 2014. Potential climate engineering effectiveness and side effects during a high carbon dioxide-emission scenario. *Nature Communications* 5(1):3304, <https://doi.org/10.1038/ncomms4304>.
- NASEM (National Academies of Sciences, Engineering, and Medicine). 2022. *A Research Strategy for Ocean-based Carbon Dioxide Removal and Sequestration*. The National Academies Press, Washington, DC, <https://doi.org/10.17226/26278>.
- Tanhua, T., A. McCurdy, A. Fischer, W. Appeltans, N. Bax, K. Currie, B. DeYoung, D. Dunn, E. Heslop, L.K. Glover, and others. 2019. What we have learned from the framework for ocean observing: Evolution of the global ocean observing system. *Frontiers in Marine Science* 6:471, <https://doi.org/10.3389/fmars.2019.00471>.

## ACKNOWLEDGMENTS

We are grateful to two reviewers for their comments, which were very helpful in revising our manuscript.

ARTICLE DOI. <https://doi.org/10.5670/oceanog.2023.s1.2>

## AUTHORS

**Philip W. Boyd\*** ([philip.boyd@utas](mailto:philip.boyd@utas)), Institute for Marine and Antarctic Studies, University of Tasmania, Hobart, TAS, Australia. **Hervé Claustre\*** ([herve.claustre@imev-mer.fr](mailto:herve.claustre@imev-mer.fr)), **Louis Legendre\*** ([legendre@imev-mer.fr](mailto:legendre@imev-mer.fr)), and **Jean-Pierre Gattuso**, Sorbonne University, CNRS, Laboratoire d'Océanographie de Villefranche (LOV), Villefranche-sur-Mer, France. **Pierre-Yves Le Traon**, Mercator Ocean International, Ramonville-Saint-Agne, France.

\*Equal first authors

## ARTICLE CITATION

Boyd, P.W., H. Claustre, L. Legendre, J.-P. Gattuso, and P.-Y. Le Traon. 2023. Operational monitoring of open-ocean carbon dioxide removal deployments: Detection, attribution, and determination of side effects. In *Frontiers in Ocean Observing: Emerging Technologies for Understanding and Managing a Changing Ocean*. E.S. Kappel, V. Cullen, M.J. Costello, L. Galgani, C. Gordó-Vilaseca, A. Govindarajan, S. Kouhi, C. Lavin, L. McCartin, J.D. Müller, B. Pirenne, T. Tanhua, Q. Zhao, and S. Zhao, eds, *Oceanography* 36(Supplement 1):2–10, <https://doi.org/10.5670/oceanog.2023.s1.2>.

## COPYRIGHT & USAGE

This is an open access article made available under the terms of the Creative Commons Attribution 4.0 International License (<https://creativecommons.org/licenses/by/4.0/>), which permits use, sharing, adaptation, distribution, and reproduction in any medium or format as long as users cite the materials appropriately, provide a link to the Creative Commons license, and indicate the changes that were made to the original content.